

MINI-V

M&T | Lever Handle



Designer: Roman Ulich





Shown Above: Sni - Satin Nickel

Material Solid Brass - Grinded or Polished

Dimension for Application Standard door thickness: 38.5 - 45mm. Mounting option for door thicknesses from 38.5 - 126mm.

5 Finishes Satin Nickel **SNi** 
Glossy Chrome **Cr** 

Brass Finishes Natural Brass **Ms** 
Polished Brass **Ms-L** 

Titanium / PVD Finishes Black **TiN-K** 

Warranty Mechanics: **3 years**
SNi, Cr: **3 years**
Titanium: **15 years**
Brass: **Lifetime**

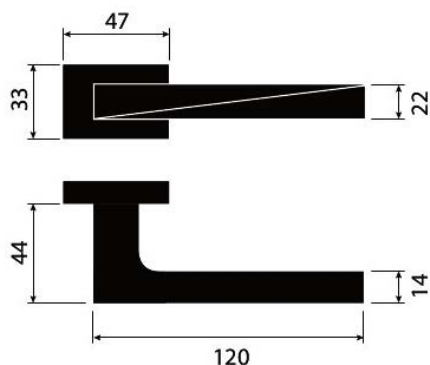
Mounting Bolt-through fixing



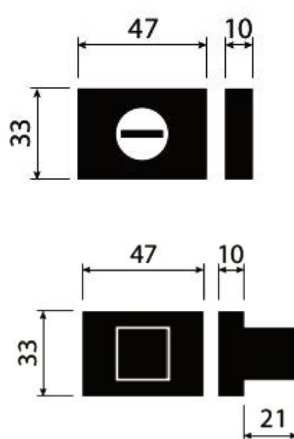
ROSE VARIATION

NON-MAGNETIC

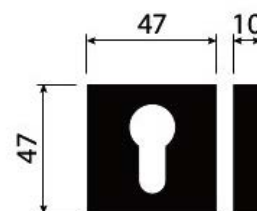
A choice of **5 finishes** and **3-15 year warranty** depending on the type of design, with quality M 2011 mechanics, for use on interior and exterior doors.



rosette Mini WC



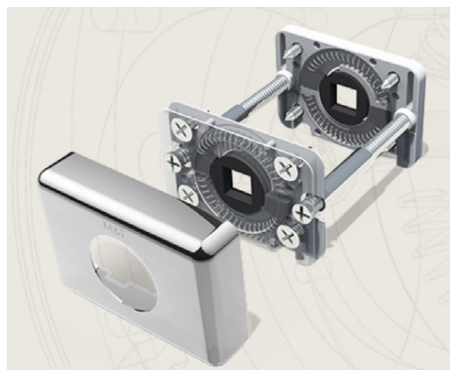
cylindrical



MANUFACTORY MECHANICS M 2011

Mechanics of the
non-magnetic rose

Mechanics M 2006 - designed, manufactured and assembled at M&T - with its own patent with the system of pressed springs and active slip system preventing from bending and cracking the door in the lock area. Simple and fast assembly



Lever Handle



Privacy Turn



Euro Cylinder



Shown Above: Satin Nickel | SNi

LOCK & LATCH OPTIONS

Two Tease offers a range of lock options for handles.
Click on the boxes to see more information.

AGB LOCKS



[Click Here](#)

TUBULAR LATCH & PRIVACY BOLTS



[Click Here](#)

Titanium Finishes



Matt Black: TiN-K

The surface of the door handles and labels M&T is coated with a hard, chemically stable film using methods PVD and PACVD. This technological process is done under lower pressure in vacuum chambers. In the PACVD (Plasma Assisted Chemical Vapour Deposition) process, the coating grows due to heterogeneous chemical reaction on the surface of the substrate.

The reaction substances are supplied in the gas phase. These gases are activated in low temperatures plasma where molecules are dissociated and radicals, ions and excited atoms arise. It decreases the activation energy

necessary for the chemical reaction so the reaction temperature can be lower. Moreover, the properties of the growing layer can be controlled by the variation of the plasma parameters. In the PVD (Physical Vapour Deposition) process, the coating grows due to deposition of atoms coming from a solid-state target placed in the vacuum recipient walls.

Advantages

A thin layer of 2 microns has several advantages, which makes it so exceptional:

The extraordinary hardness

7 times harder than handles with a protective baked enamel

High resistance to abrasion and scratching

Cannot be damaged/ scratched with normal use

Colours and chemical stability

The surface even after many years has the same colour

Corrosion

Quality applied coatings are only slightly microporous, which prevents the penetration of small particles to material of handle and thus the formation of corrosion.

Brass Finishes

- Internal and external use
- Anti-microbial
- Maintenance Free - cotton or micro fibre use
- Lead time: 10 weeks
- Lifetime guarantee for brass



Natural Brass (MS)

Mechanically treated surface on a brass product with a soft texture and colours. The surface ages naturally and the colour changes in according to the weather conditions and climatic conditions.



Polished Brass (Ms-L)

Mechanically polished brass surface with a high gloss finish which will gradually patina. Surface gets naturally old and changes colour and appearance according to frequency of use on a brass product with the effect of several years use providing an aged finish. The brass has a combination of lighter and darker shades, and the surface will naturally age and change its colour according to the climatic conditions.

Other Finishes



Cr: Glossy Chrome



SNi: Matt Nickel