



CONTENTS

Sizes & Finishes 2

Technical Details 3

 Hinge Guide

 S-5 4

 M-6 5

 L-7 6

 Hinge 7

 Performance

 Dimensions 9

 Hinge Template 10

INVISIBLE NEO

ARGENTA | Concealed Hinges



EASE OF USE

- Universal:** For left and right-sided doors
- 3D Adjustable:** Invisible hinges can be set in height, width and depth without taking the door off
- Easy Hook:** Installation and 3D adjustment can be quickly performed by just one person. Thanks to the simplified height adjustment, not even a wedge is needed any more



DURABILITY & SAFETY

- Fingers are protected:** Because of the minimal space between the door and frame.
- Cycle Tests:** For opening and shutting movement (min. 200, 000)
- Fire Rated:** Available in fireproof versions of 30 or 60 minutes



AESTHETICS

- Clean Finish:** Small, compact and no visible screws even when the door is open
- Invisible:** Allows the door to be perfectly flush with the wall
- 3 Sizes:** Each with different load-bearing capacities (S5, M6, L7)
- Versatile:** They can be used for interior doors that open up to 180° and are suitable for both left-opening and right-opening doors.

Invisible Neo

3 SIZES & 11 FINISHES



Matt Chrome

S5 70000061
M6 70000062
L7 70000003



Glossy Chrome

S5 70000066
M6 70000067
L7 70000068



Stainless Steel

S5 70000069
M6 70000070
L7 70000071



Classic Bronze

S5 70000095
M6 70000096
L7 70000097



Bronze

S5 70000139
M6 70000141
L7 70000143



Copper

S5 70000156
M6 70000174
L7 70000175



Polished Brass

S5 70000093
M6 70000092
L7 70000065



Tar Black

S5 70000106
M6 70000107
L7 70000108



Black Umber

S5 70000109
M6 70000110
L7 70000111



Dark Bronze

S5 70000140
M6 70000142
L7 70000144



White (MAT 9016)

S5 70000072
M6 70000073
L7 70000074

Invisible Neo

TECHNICAL DETAILS

	S-5	M-6	L-7												
Material:	ZAMAK														
Door Thickness	Min. 33 mm	Min. 36 mm	Min. 40 mm												
Door thickness with max. front panel	35 mm	40 mm	46 mm												
Overall Depth	<table border="1"> <tr> <td>Frame</td> <td>26.5 mm</td> </tr> <tr> <td>Door</td> <td>30 mm</td> </tr> </table>	Frame	26.5 mm	Door	30 mm	<table border="1"> <tr> <td>Frame</td> <td>30 mm</td> </tr> <tr> <td>Door</td> <td>32 mm</td> </tr> </table>	Frame	30 mm	Door	32 mm	<table border="1"> <tr> <td>Frame</td> <td>30 mm</td> </tr> <tr> <td>Door</td> <td>36 mm</td> </tr> </table>	Frame	30 mm	Door	36 mm
Frame	26.5 mm														
Door	30 mm														
Frame	30 mm														
Door	32 mm														
Frame	30 mm														
Door	36 mm														
Dimensions (L x W)	120 x 25 mm	140 x 28 mm	170 x 32 mm												
Weight Capacity Guide ¹															
3 Hinges	80kg	100 kg	150 kg												
Installment & Adjustment	Easy-Hook														
Height Adjustment ¹	-2.5 +2.5 mm	- 3 + 3 mm	- 3 + 3 mm												
Width Adjustment ¹		- 3 + 4 mm													
Depth Adjustment ¹	- 1 + 1 mm	- 1.5 + 1.5 mm	- 1.5 + 1.5 mm												
Max. Front Panel (Cladding) Size	5 mm	6 mm	7 mm												
Fire Resistant ²	E30, EI ₂ 30, EI ₁ 30, EW30	E60, EI ₂ 60, EI ₁ 60,	E60, EI ₂ 60, EI ₁ 60, EW60												
CE Marking	2 7 3 1 1 4 0 10	3 7 4 1 1 4 0 11a	4 7 5 1 1 4 1 12a												
Screw dia.	SPAX-Z2 Dia: max. 4.5	Dia: max.5	Dia: max.5												

1 = Based on a reference door of 1000 x 2000 mm

2 = Fire resistant according to standard EN1634-1: 2008 and classified according to EN13501-2:2007 for use of wooden door with wooden door frame, and for wooden door with stainless steel frame.

Quantity of hinge required for a standard 2040 mm door.

Please make adjustments according to the height of the door as well as considering the weight.

Invisible Neo S-5

HINGE GUIDE

Measurements displayed on the table are based of a door with **max. height of 2000mm** for Invisible Neo S-5.

Number of invisible hinges to be used in function of door weight and a maximum door of 2000 mm (height) x 1000 mm (width) according to EN 1935:

- 2 Hinges* Max. 60kg
- 3 Hinges Max.80kg

* In order to maintain the perpendicular line of the door panel, the use of a minimum of 3 hinges is recommended

Max. door weight	120 kg	> 4 pieces					
	115 kg						
	110 kg	4 pieces					
	105 kg						
	100 kg	3 pieces					
	95 kg						
	90 kg						
	85 kg						
	80 kg	2 pieces					
	75 kg						
	70 kg						
	65 kg						
	60 kg						
	55 kg						
	50 kg						
	45 kg						
		730 mm	830 mm	930 mm	1030 mm	1130 mm	1230 mm
		Door width					

Invisible Neo M-6

HINGE GUIDE

Measurements displayed on the table are based of a door with **max. height of 2000mm for Invisible Neo M-5.**

Number of invisible hinges to be used in function of door weight and a maximum door of 2000 mm (height) x 1000 mm (width) according to EN 1935:

- 2 Hinges* Max. 80kg
- 3 Hinges Max. 100kg

* In order to maintain the perpendicular line of the door panel, the use of a minimum of 3 hinges is recommended

Max. door weight	140 kg	> 4 pieces						
	135 kg							
	130 kg	4 pieces						
	125 kg							
	120 kg	3 pieces						
	115 kg							
	110 kg							
	105 kg							
	100 kg	2 pieces						
	95 kg							
	90 kg							
	85 kg							
	80 kg							
	75 kg							
	70 kg							
	65 kg							
			730 mm	830 mm	930 mm	1030 mm	1130 mm	1230 mm
Door width								

Invisible Neo L-7

HINGE GUIDE

Measurements displayed on the table are based of a door with **max. height of 2000mm** for Invisible Neo L-7.

Number of invisible hinges to be used in function of door weight and a maximum door of 2000 mm (height) x 1000 mm (width) according to EN 1935:

- 2 Hinges* Max. 100kg
- 3 Hinges Max. 150kg

* In order to maintain the perpendicular line of the door panel, the use of a minimum of 3 hinges is recommended

Max. door weight	170 kg	4 pieces		> 4 pieces			
	165 kg			> 4 pieces			
	160 kg	3 pieces					
	155 kg						
	150 kg						
	145 kg						
	140 kg						
	135 kg						
	130 kg	2 pieces					
	125 kg						
	120 kg						
	115 kg						
	110 kg						
	105 kg						
	100 kg						
	95 kg						
	90 kg						
	85 kg						
	80 kg						
	75 kg						
70 kg							
	730 mm	830 mm	930 mm	1030 mm	1130 mm	1230 mm	
	Door width						

Invisible Neo

HINGE PERFORMANCE

The European standard EN1935 classifies hinges using an 8 digit coding system. Each digit refers to a particular feature of the product measured against the standard's performance requirements.

Classification Summary

1. CATEGORY OF USE Four Grades

- 1** Light Duty
- 2** Medium Duty
- 3** Heavy Duty
- 4** Severe Duty

2. DURABILITY Three Grades

- 3** 10 000 Test Cycles For light duty on windows only
- 4** 25 00 Test Cycles For light duty on windows & doors
- 7** 200 000 Test Cycles For medium, heavy & severe duty hinges on doors only

3. DOOR MASS TEST Eight Grades

- 0** 10kg **4** 80kg
- 1** 20kg **5** 100kg
- 2** 40kg **6** 120kg
- 3** 60kg **7** 160kg

4. FIRE DURABILITY Two Grades
SMOKE DOOR USE

- 0** Not suitable for fire/smoke resistant door assemblies
- 1** Suitable for fire/smoke resistant door assemblies subject to satisfactory assessment of the contribution of the hinge to the fire resistance of the specified fire/smoke door assemblies. Such assessment is beyond the scope of this European standard (see EN 1634-1).

5. SAFETY One Grade

- 1** Single-axis hinges are required to satisfy the essential requirements of safety in use. Therefore, only grade 1 is identified.

SIZE	Category of Use	Durability	Door Mass Test	Fire Resistance	Safety	Corrosion	Security	Hinge Grade
S-5	2	7	3	1	1	4	0	10
M-6	3	7	4	1	1	4	0	11a
L-7	4	7	5	1	1	4	1	12a

6. CORROSION RESISTANCE Five Grades

- 0** No defined corrosion resistance
- 1** Mild Resistance
- 2** Moderate Resistance
- 3** High Resistance
- 4** Very High Resistance

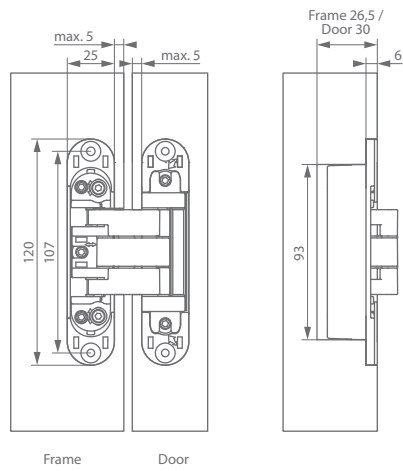
7. SECURITY Two Grades

- 0** Not suitable for use on burglar-resistant door assemblies
- 1** Suitable for applications requiring a degree of security.
Annex C of this European standard details the hinge grade to use for the level of security required.

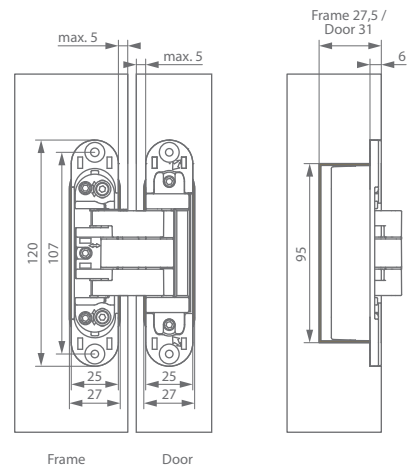
8. HINGE GRADE Fourteen Grades

Hinge Grade	Usage		Test Cycles	Door Mass (Kg)
1	Window		10 000	10
2	Window		10 000	20
3	Window	Door	25 000	20
4		Door	200 000	20
5	Window		10 000	40
6	Window	Door	25 000	40
7		Door	200 000	40
8	Window		10 000	60
9	Window	Door	25 000	60
10		Door	200 000	60
11		Door	200 000	80
12		Door	200 000	100
13		Door	200 000	120

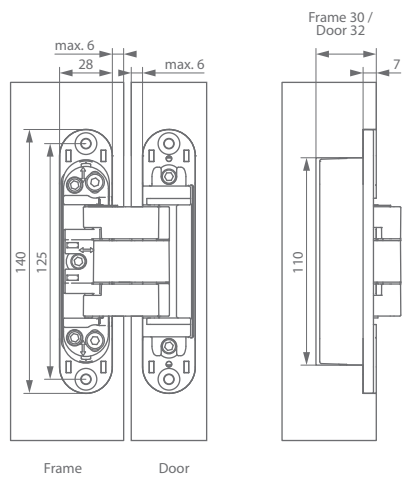
invisible neo S-5



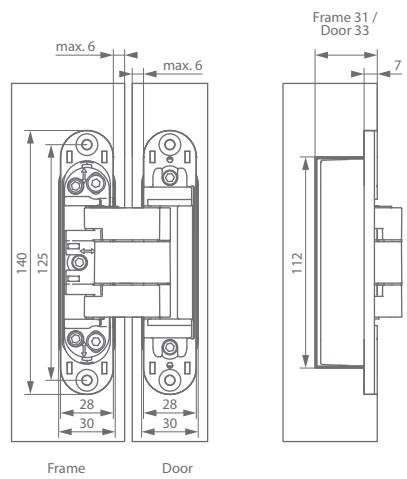
invisible neo S-5 fire resistant



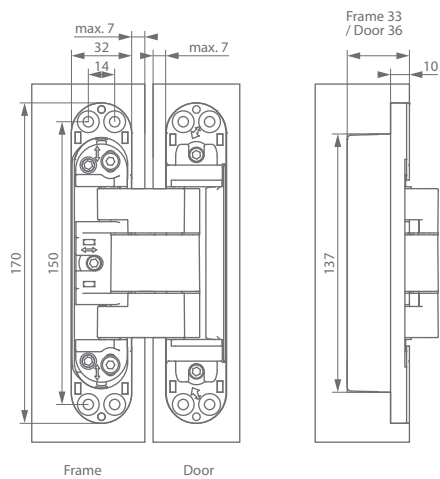
invisible neo M-6



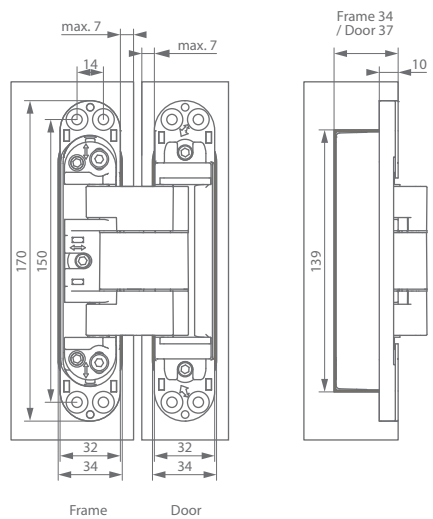
invisible neo M-6 fire resistant







invisible neo L-7



invisible neo L-7 fire resistant





<p>1 1261 Router Template FIS Basis Set</p>	<p>2 1162 Router Template for ARGENTA Invisible NEO</p>	<p>3 Router Guide Bush</p>	<p>4 Groove Cutter</p>
	 <p>Two are required</p>	 <p>Matching router guide bush to hinge</p>	

HINGE TEMPLATE

Invisible Neo

Fast, easy and efficient installation of the concealed hinges using 247WOOD Router Jigs

Kit Includes:

1261 | FIS Basis Set
Two Template Frames, Aluminum Full Length, Stop Block

1261 | 2 x Router Template

Order additional routing hinge templates (1037) for doors that have more than 2 hinges.

What?

The template frame sets up the position of the hinges on the door & frame allowing for consistent measurements

Easy and Fast

These invisible hinge mills are made from a quality technical plastic and can be used loosely as well as on a rail. By means of a steel insert you can fill in both the deepened part and the sight part in a fixture, this saves time and reduces the chance of errors.