

YES!

M&T | Magnetic Pull Handle

Designer: Roman Ulich



Material Solid Brass

Application For Interior Doors

10 Finishes

Matt Nickel	SNi
Matt Nickel - Grinded	SNi - Grinded
Glossy Chrome	Cr
Black Chrome	Cr-K
Natural Brass	Ms
Antique Brass	Ms-A

Variants **Finger Pull**
Available with/without
integrated WC/Bathroom locks
Available with/without

Titanium Finishes

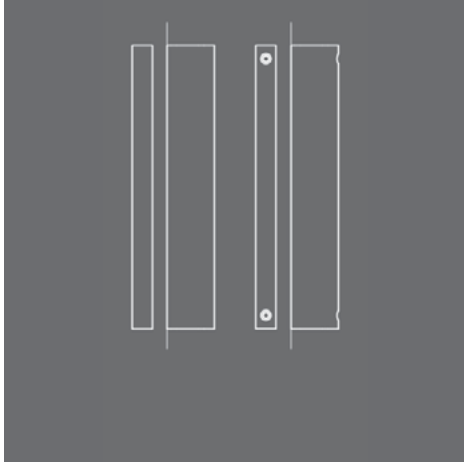
Black	TiN-K
Matt Brass	TiN-A
Matt Chrome	TiN-C
Matt Brown	TiN-B

Warranty SNi, Cr: **3 years**
Titanium: **15 years**
Brass: **Lifetime**

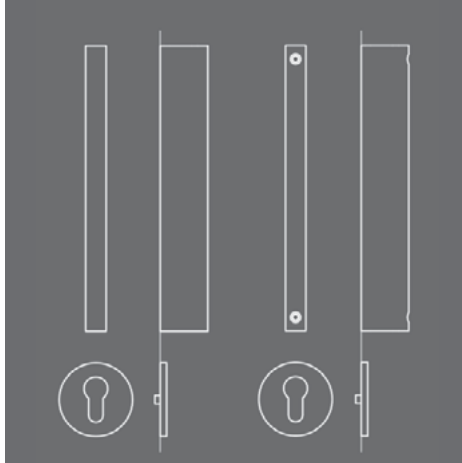
Dimensions Lengths: **110, 210, 310, 610, 910mm**
Width: **15mm**
Output over the door surfaces **35mm**



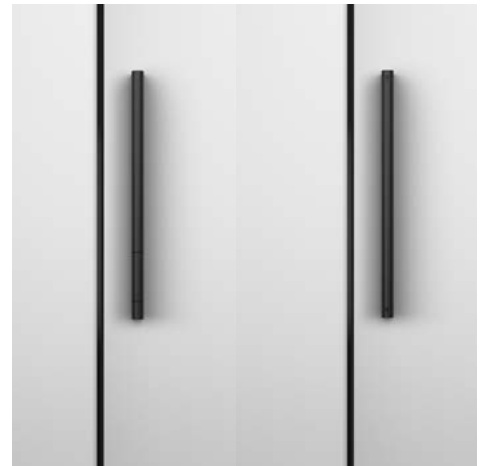
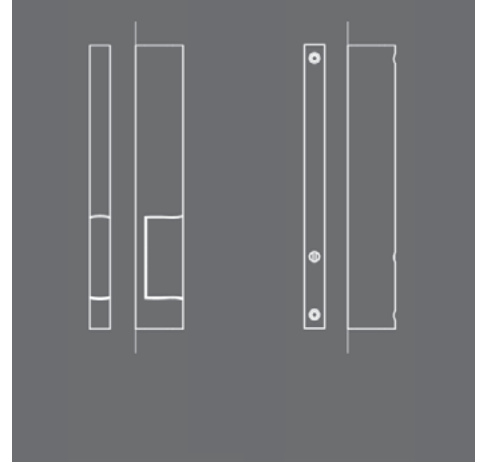
VARIATIONS



YES! 210
Standard



YES! 210
With magnetic rosette lock



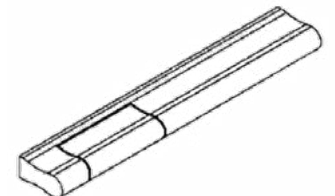
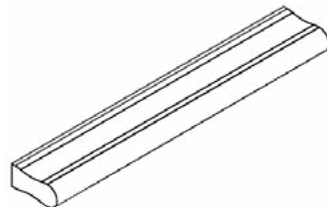
YES! 210
WC IN

YES! 210
WC EX

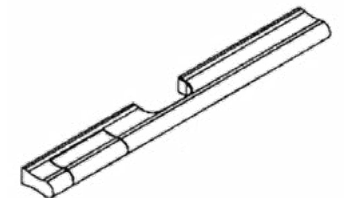
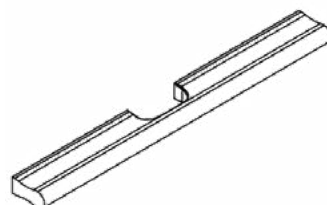
Without integrated WC

With integrated WC

Without Finger Pull



With Finger Pull



DIMENSIONS & ASSEMBLY

Assembly System Screwing the pull handles against each other with 2 screws.

W/C Variant

With 2 additional screws, with mini recessed screw heads.

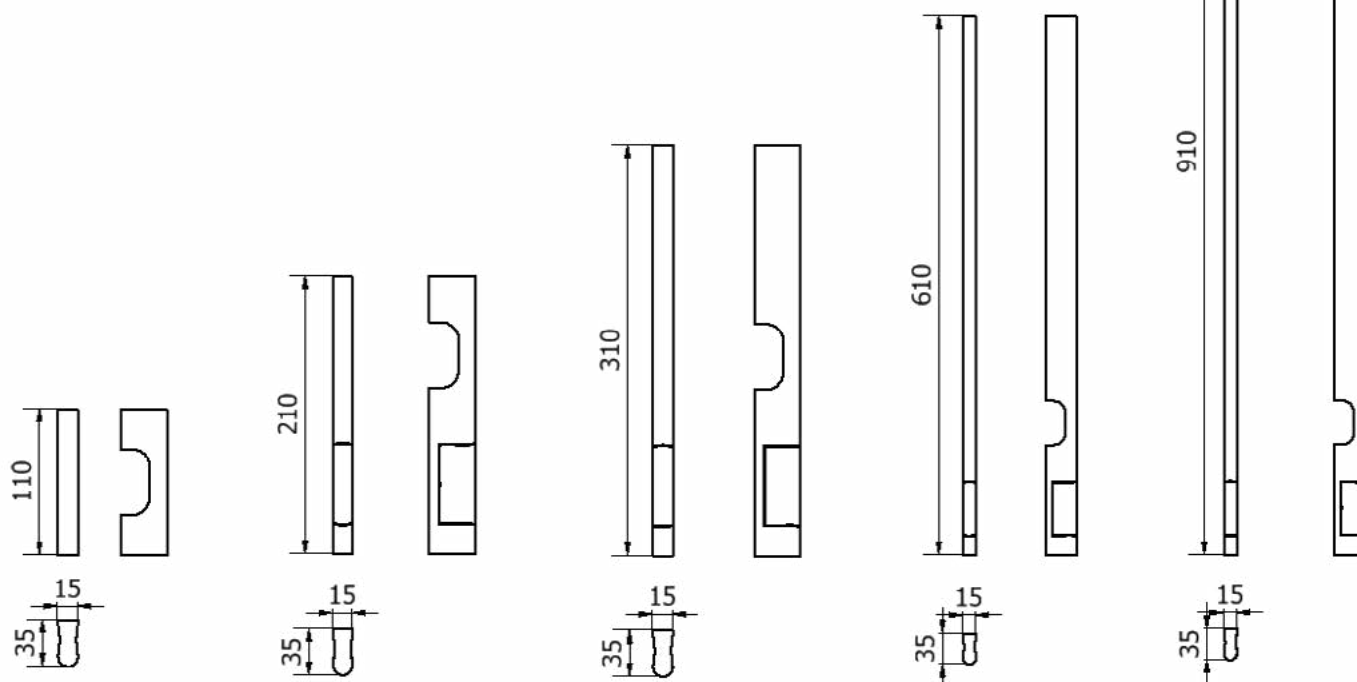
Preparation for door Hole Milling

Assembly Time 2-4 minutes

W/C Bathroom Variant 5-10 minutes

Magnetic fillings in the surface of the handle (ie SNI, Cr, TiN-K) and mounting material for a door thickness of 38 - 41 mm are part of the delivery of the handles. For other door thicknesses, it is necessary to order mounting material according to the table.

Door Thickness (mm)	EAN Code
46-50	124781
51-55	124798
56-60	124804



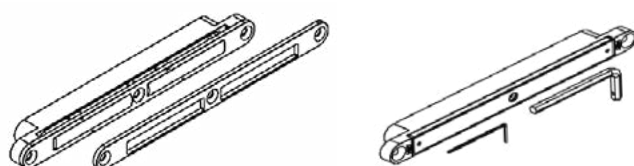
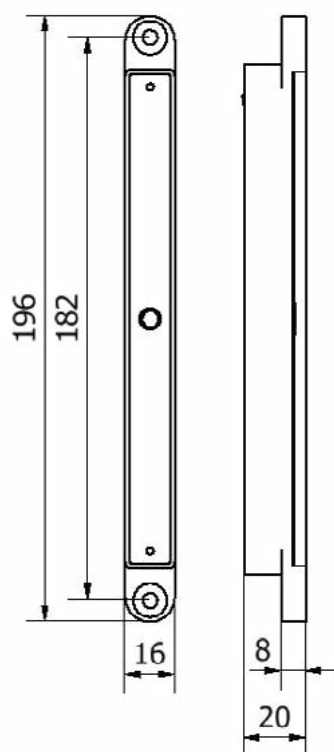
All sizes have the option to be with/without finger pull or with/without integrated WC in any combination.

LOCK OPTION

M&T | Magnetic Door Closing System



Dimensions



M&T Magnetics is a revolutionary magnetic system that enables doors to open easily and close perfectly. Strong magnets in the door and frame allow for perfectly smooth and noiseless closing, holding the door closed without the need for a lock. Intended primarily for internal doors, the range also includes mini locks that can be added where extra privacy is needed

Material Metal Body
Neodymium Magnets

3 Finishes Satin Stainless Steel
White
Black

Warranty Surfaces: **3 years**
Function: **30 years**

Application Designed for interior doors for heights up to 3m and for door weights up to 200kg. Efficiency can be increased by using 2 or more magnets.

Cylindrical WC lock

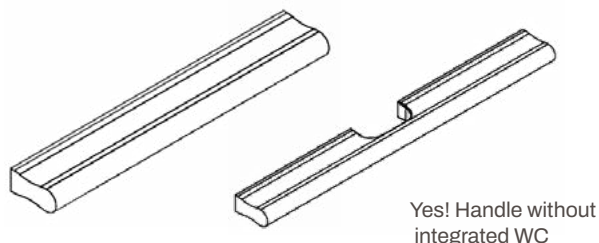
Alternate option for integrated WC in Yes! Handle

Material Brass
Stainless Steel
Magnetic Stainless Steel

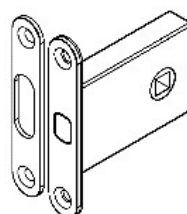
3 Finishes Stainless Steel Brushed
Matt White
Matt Black

Warranty Surfaces: **3 years**

Application Standard for door thickness 38-45mm. Bigger thicknesses must be specified for longer assembly components



Yes! Handle without integrated WC



WC Lock

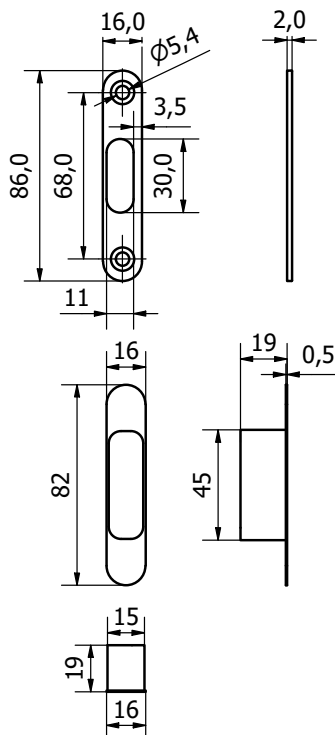
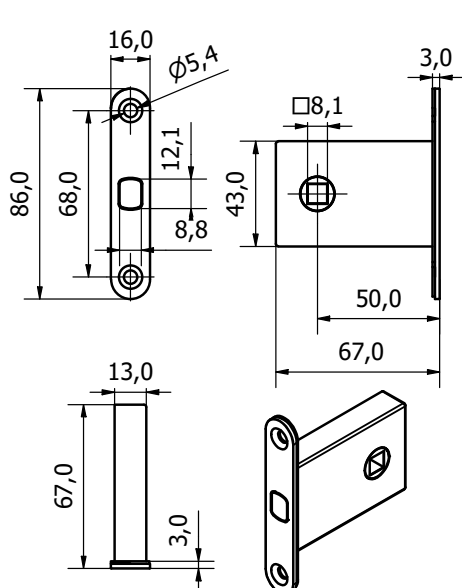


WC EX

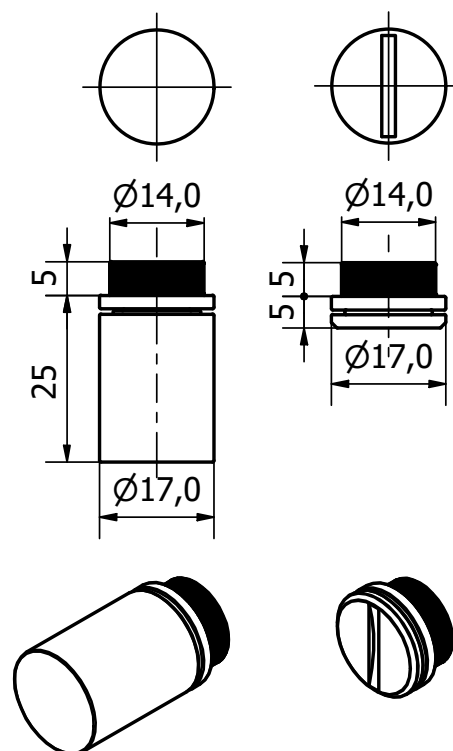


WC IN

WC Round Rosette Lock

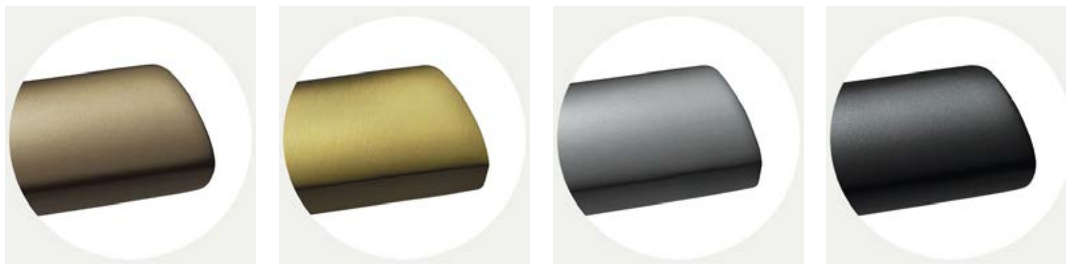


Round Cylinder



M&T FINISHES

Titanium Finish



Matt Brown: TiN-B

Matt Brass: TiN-A

Matt Chrome: TiN-C

Matt Black: TiN-K

Titanium Finish

The surface of the door handles and labels M&T is coated with a hard, chemically stable film using methods PVD and PACVD. This technological process is done under lower pressure in vacuum chambers. In the PACVD (Plasma Assisted Chemical Vapour Deposition) process, the coating grows due to heterogeneous chemical reaction on the surface of the substrate.

The reaction substances are supplied in the gas phase. These gases are activated in low temperatures plasma where molecules are dissociated and radicals, ions and excited atoms arise. It decreases the activation energy necessary for the chemical reaction so the reaction temperature can be lower. Moreover, the properties of the growing layer can be controlled by the variation of the plasma parameters. In the PVD (Physical Vapour Deposition) process, the coating grows due to deposition of atoms coming from a solid-state target place in the vacuum recipient walls.

Advantages

A thin layer of 2 microns has several advantages, which makes it so exceptional:

The extraordinary hardness

7 times harder than handles with a protective baked enamel

High resistance to abrasion and scratching

Cannot be damaged/ scratched with normal use

Colours and chemical stability

The surface even after many years has the same colour

Corrosion

Quality applied coatings are only slightly microporous, which prevents the penetration of small particles to material of handle and thus the formation of corrosion.

Brass Finishes

- Internal and external use
- Anti-microbial
- Maintenance Free - cotton or micro fibre use
- Lead time: 10 weeks
- Lifetime guarantee for brass

Natural Brass (MS)

Mechanically treated surface on a brass product with a soft texture and colours. The surface ages naturally and the colour changes in according to the weather conditions and climatic conditions.



Polished Brass (MS-L)

Mechanically polished brass surface with a high gloss finish which will gradually patina. Surface gets naturally old and changes colour and appearance according to frequency of use on a brass product with the effect of several years use providing an aged finish. The brass has a combination of lighter and darker shades, and the surface will naturally age and change its colour according to the climatic conditions.



Antique Brass (MS-A)

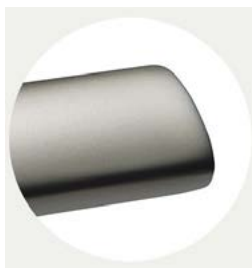
Mechanically modified surface on a brass product with the effect of several years use providing an aged finish. The brass has a combination of lighter and darker shades, and the surface will naturally age and change its colour according to the climatic conditions.



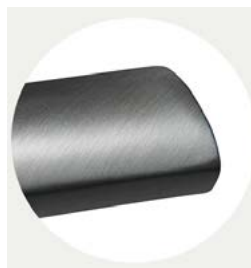
Other Finishes



Cr: Glossy Chrome



SNi: Matt Nickel



SNi- Grinded:
Matt Nickel- Grinded



Cr-K: Black Chrome