

Specifications details

OKO

M&T Magnetics | Pull Handle

Designer: Roman Ulich



OKO with M&T Magnetic Closing System

Material		Metal Body Magnetic Insert	Dimensions for application		Standard for door thickness 38-42 mm, bigger door thickness should be specified to deliver longer mounting screws
9 Finishes for Grip	Matt Nickel	SNi	Variants	WC/ Bathroom Lock	
	Matt Nickel - Grinded	SNi - Grinded		EURO Round magnetic rosette	
	Glossy Chrome	Cr			
Brass Finishes	Natural Brass	Ms	Warranty	SNi, Cr: 3 years	
	Antique Brass	Ms-A		Titanium: 15 years	
Titanium Finishes	Black	TiN-K		Brass: Lifetime	
	Matt Brass	TiN-A			
	Matt Chrome	TiN-C			
	Matt Brown	TiN-B			
Variants for Magnetic filling /insert plate		Personalise your own insert plate with RAL colours.	Dimensions (mm)		Ø 63 Output over the door surface: 33mm

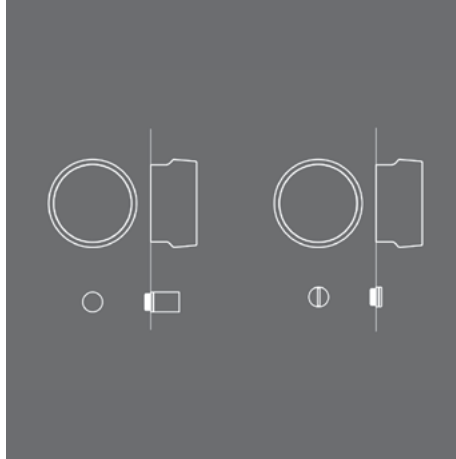


VARIATIONS

OKO | Standard

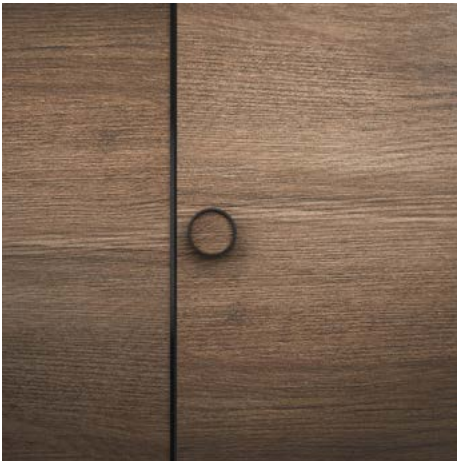
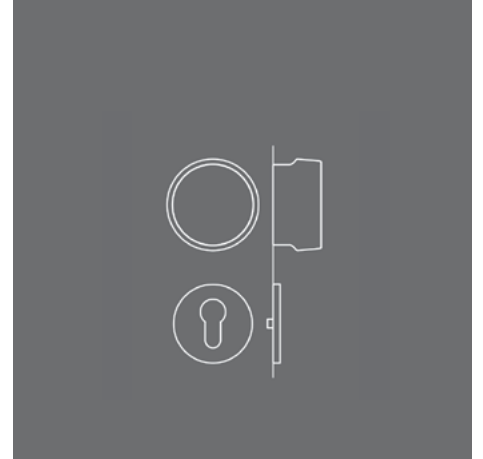


OKO | WC IN



WC EX

OKO | With magnetic rosette lock



OKO | with M&T Magnetic Closing System



DIMENSIONS & ASSEMBLY

Assembly System screwing the base plates against each other with 4 screws, covering the mounting screws with a magnetic face plate

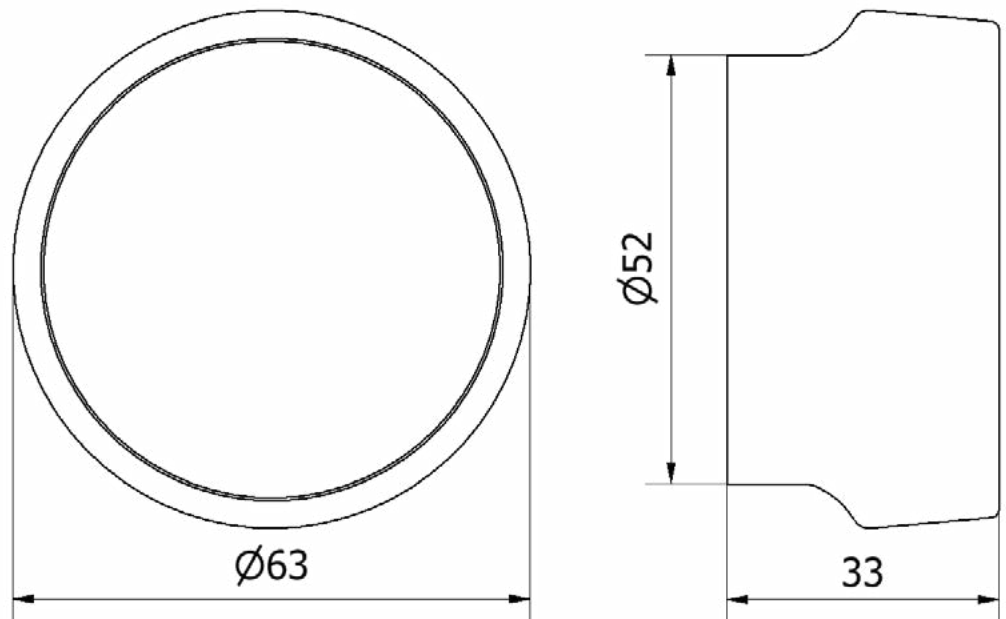
Preparation for door Milling Hole

Assembly Time 2-3 minutes
W/C Bathroom Variant 5-10 minutes

Application Designed for interior doors

Mounting material for a door thickness of 38 - 45 mm are part of the delivery of the handles. For other door thicknesses, it is necessary to order mounting material according to the table.

Door Thickness (mm)	EAN Code
46-50	124811
51-55	124828
56-60	124835

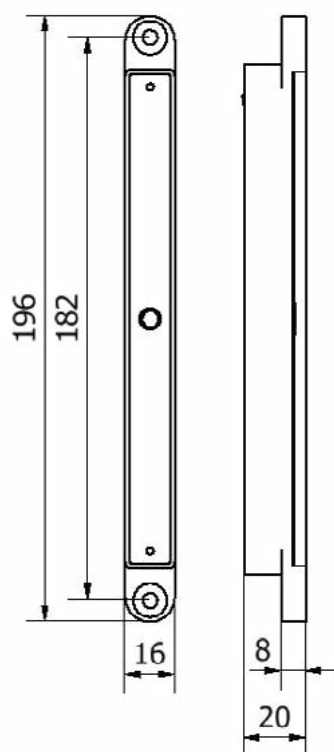


LOCK OPTION

M&T | Magnetic Door Closing System



Dimensions



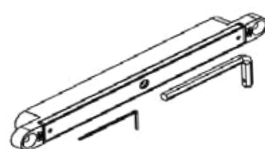
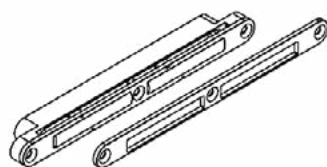
M&T Magnetism is a revolutionary magnetic system that enables doors to open easily and close perfectly. Strong magnets in the door and frame allow for perfectly smooth and noiseless closing, holding the door closed without the need for a lock. Intended primarily for internal doors, the range also includes mini locks that can be added where extra privacy is needed

Material Metal Body
Neodymium Magnets

3 Finishes Satin Stainless Steel
White
Black

Warranty Surfaces: **3 years**
Function: **30 years**

Application Designed for interior doors for heights up to 3m and for door weights up to 200kg. Efficiency can be increased by using 2 or more magnets.



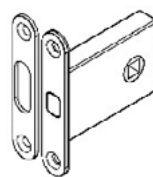
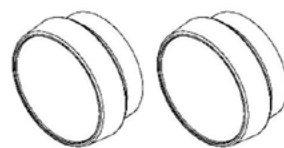
Cylindrical WC/Euro lock

Material Brass
Stainless Steel
Magnetic Stainless Steel

3 Finishes Stainless Steel Brushed
Matt White
Matt Black

Warranty Surfaces: **3 years**

Application Standard for door thickness 38-45mm. Bigger thicknesses must be specified for longer assembly components



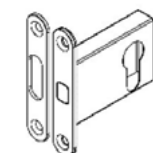
WC Lock



WC IN

WC EX

OR

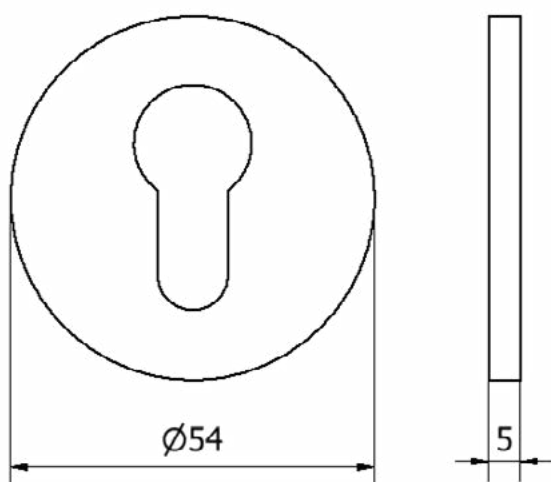


Euro Lock



EURO Round

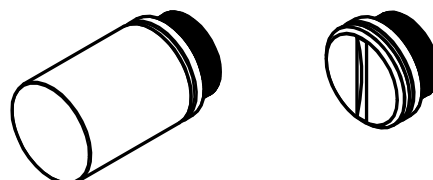
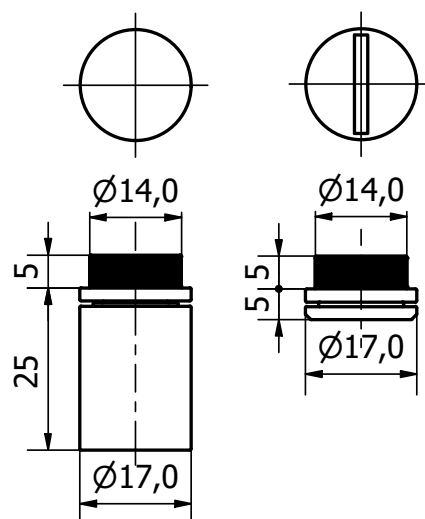
EURO Round



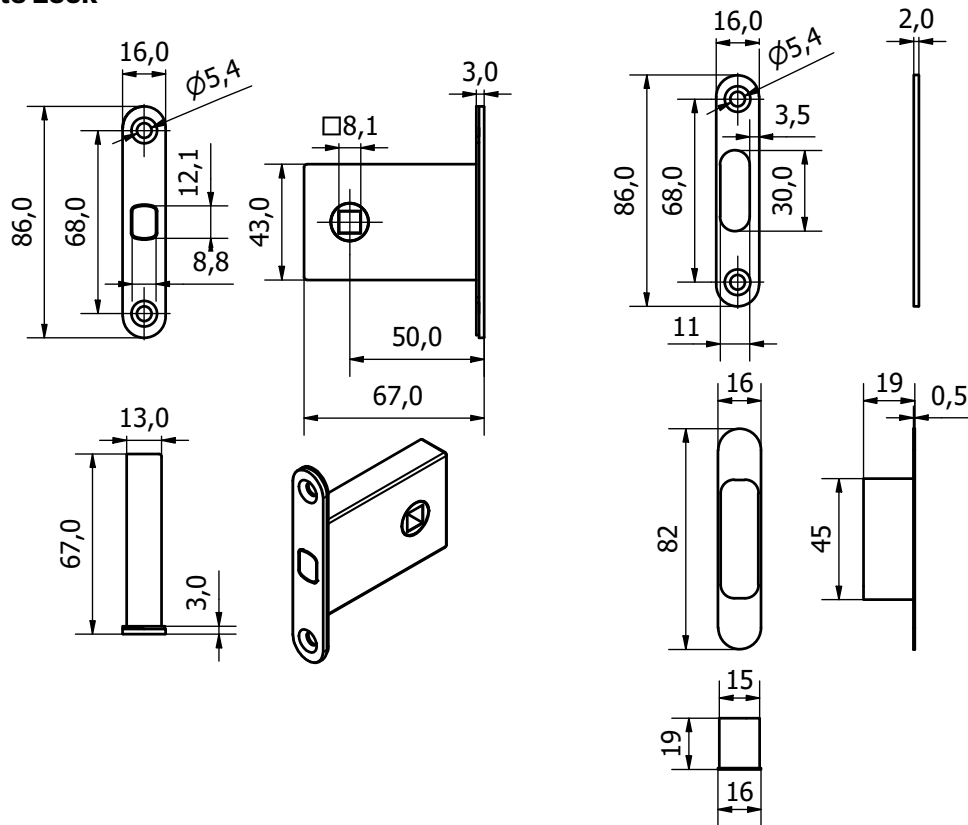
Round Cylinder

WC IN

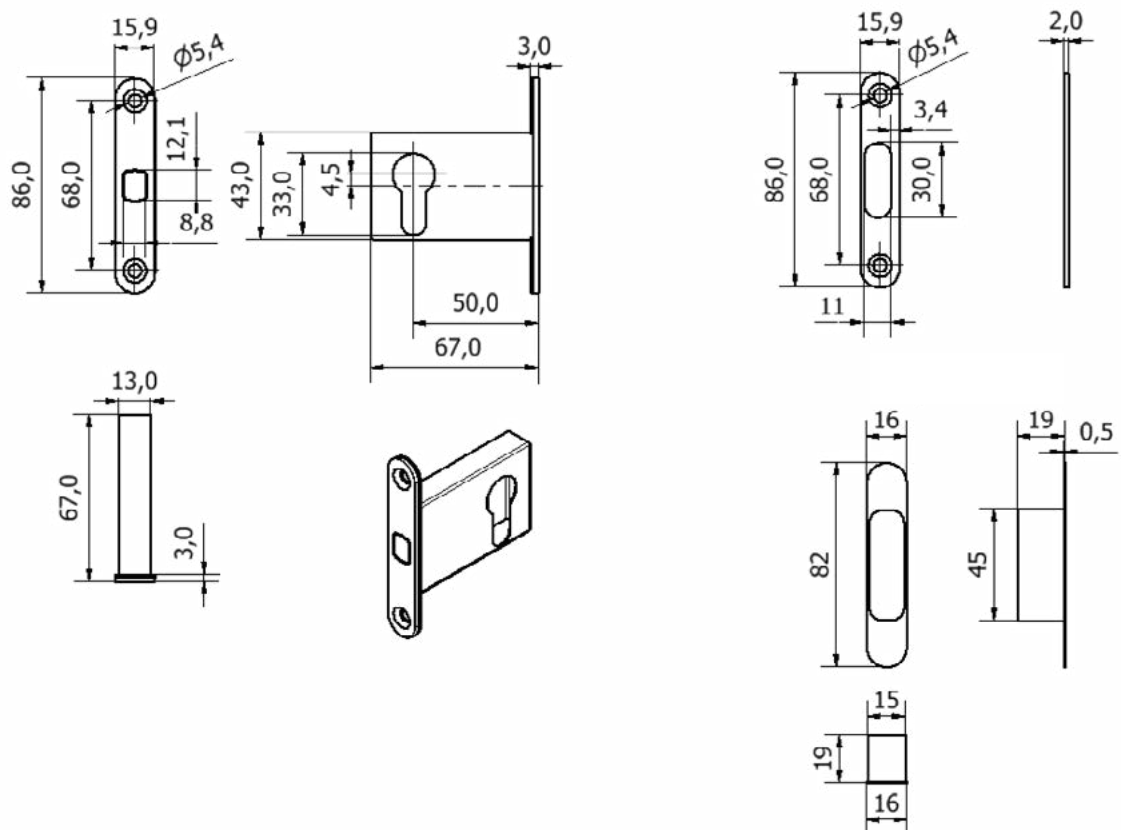
WC EX



WC Square Rosette Lock

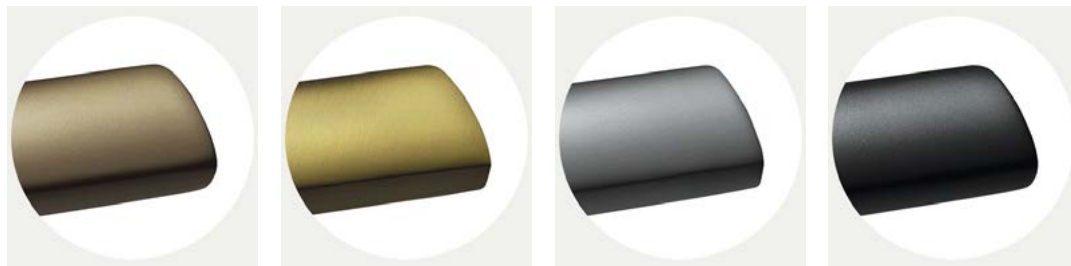


Euro Lock



M&T FINISHES

Titanium Finish



Matt Brown: TiN-B

Matt Brass: TiN-A

Matt Chrome: TiN-C

Matt Black: TiN-K

Titanium Finish

The surface of the door handles and labels M&T is coated with a hard, chemically stable film using methods PVD and PACVD. This technological process is done under lower pressure in vacuum chambers. In the PACVD (Plasma Assisted Chemical Vapour Deposition) process, the coating grows due to heterogeneous chemical reaction on the surface of the substrate.

The reaction substances are supplied in the gas phase. These gases are activated in low temperatures plasma where molecules are dissociated and radicals, ions and excited atoms arise. It decreases the activation energy necessary for the chemical reaction so the reaction temperature can be lower. Moreover, the properties of the growing layer can be controlled by the variation of the plasma parameters. In the PVD (Physical Vapour Deposition) process, the coating grows due to deposition of atoms coming from a solid-state target place in the vacuum recipient walls.

Advantages

A thin layer of 2 microns has several advantages, which makes it so exceptional:

The extraordinary hardness

7 times harder than handles with a protective baked enamel

High resistance to abrasion and scratching

Cannot be damaged/ scratched with normal use

Colours and chemical stability

The surface even after many years has the same colour

Corrosion

Quality applied coatings are only slightly microporous, which prevents the penetration of small particles to material of handle and thus the formation of corrosion.

Brass Finishes

- Internal and external use
- Anti-microbial
- Maintenance Free - cotton or micro fibre use
- Lead time: 10 weeks
- Lifetime guarantee for brass

Natural Brass (MS)

Mechanically treated surface on a brass product with a soft texture and colours. The surface ages naturally and the colour changes in according to the weather conditions and climatic conditions.



Polished Brass (MS-L)

Mechanically polished brass surface with a high gloss finish which will gradually patina. Surface gets naturally old and changes colour and appearance according to frequency of use on a brass product with the effect of several years use providing an aged finish. The brass has a combination of lighter and darker shades, and the surface will naturally age and change its colour according to the climatic conditions.



Antique Brass (MS-A)

Mechanically modified surface on a brass product with the effect of several years use providing an aged finish. The brass has a combination of lighter and darker shades, and the surface will naturally age and change its colour according to the climatic conditions.



Other Finishes



Cr: Glossy Chrome



SNi: Matt Nickel



SNi- Grinded:
Matt Nickel- Grinded