

KONZERVA

M&T Magnetics | Pull Handle

Konzerva 110 & 220
Designer: Roman Ulich



Standard 110 KONSERVA

Standard 220 KONSERVA

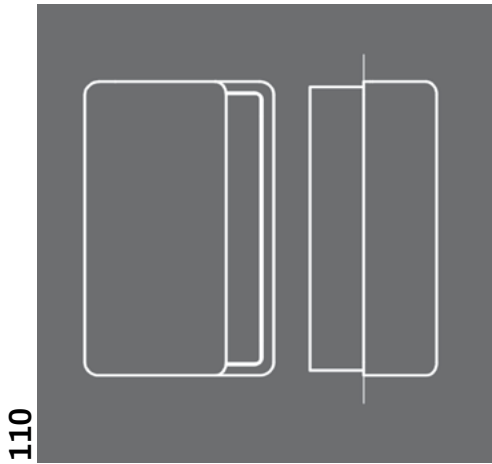
Material	Metal Body Magnetic Insert
2 Finishes for Grip	SNi Matt Nickel Titanium Finish TiN-K Black
Variants for Magnetic filling /insert plate	Personalise your own insert plate with RAL colours.
Dimensions (mm)	(W)67 x (H)110 (W)67 x (H)220 Output over the door surface: 25mm

Dimensions for application	Standard for door thickness 38-42 mm, bigger door thickness should be specified to deliver longer mounting screws
Application	Designed for interior doors
Variants	WC/ Bathroom Lock EURO Round magnetic rosette
Warranty	SNi: 3 years Titanium: 15 years

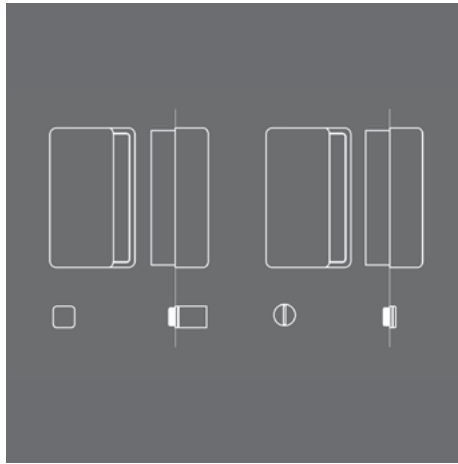


VARIATIONS

KONZERVA | Standard

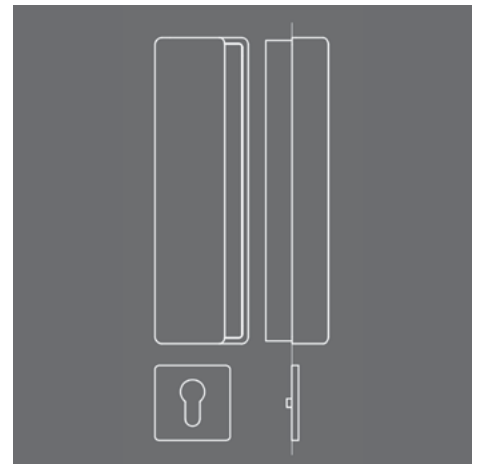
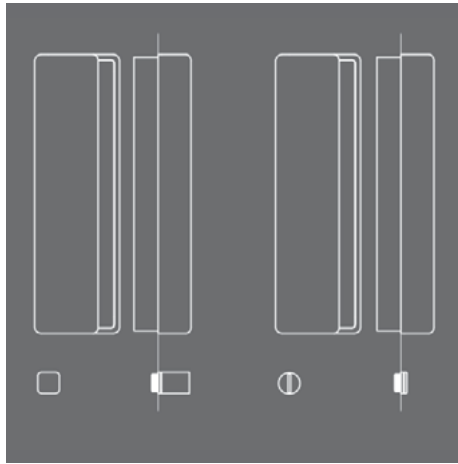
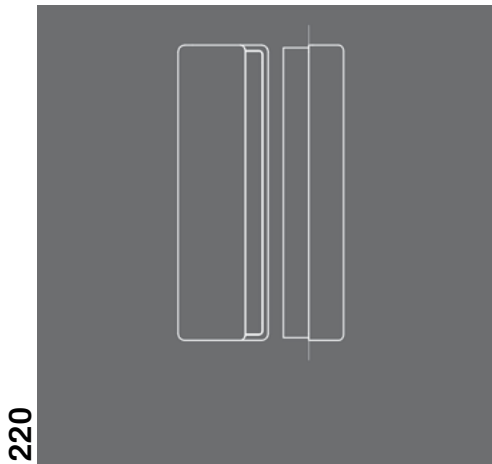
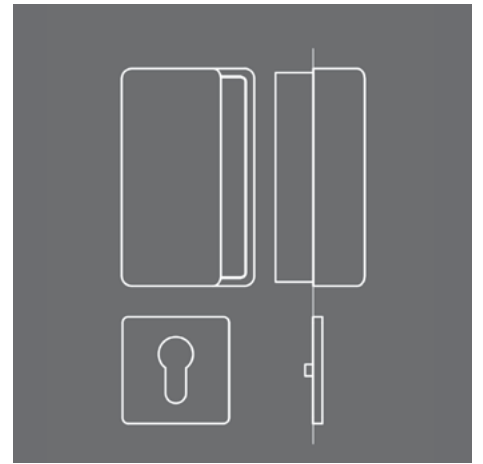


KONZERVA | WC IN



WC EX

KONZERVA | Magnetic rosette lock



KONZERVA | with M&T Magnetic Closing System



DIMENSIONS & ASSEMBLY

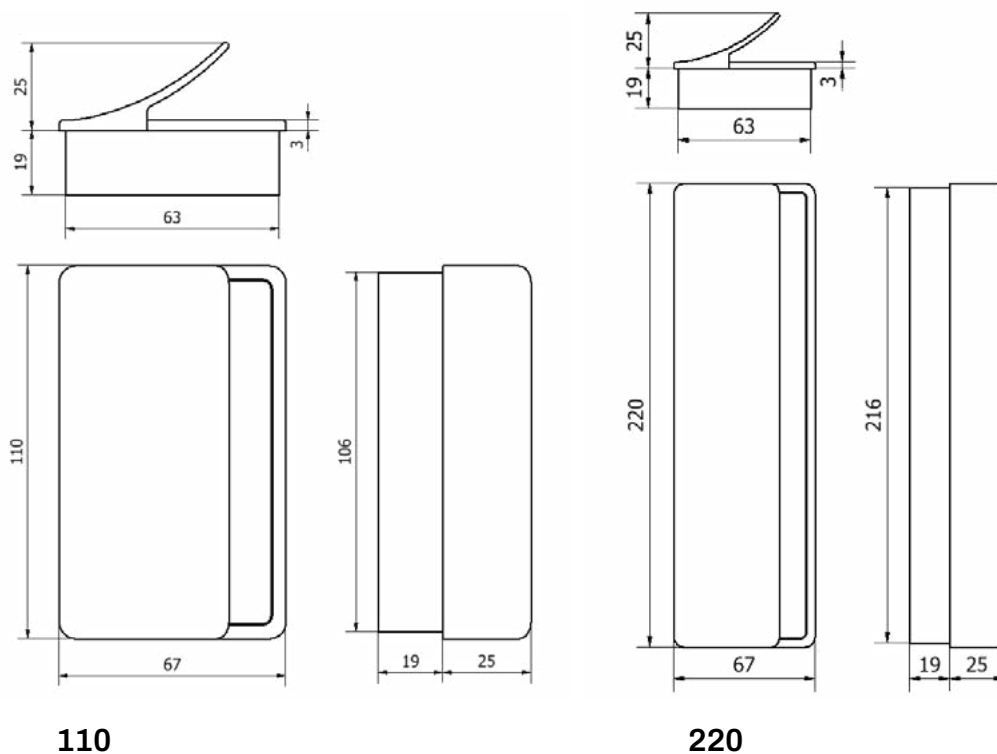
Assembly System screwing the base plates against each other with 4 screws, covering the mounting screws with a magnetic face plate

Preparation for door Milling Hole

Assembly Time 1-2 minutes
W/C Bathroom Variant 3-5 minutes

Magnetic fillings in the surface of the handle (ie SNI, Cr, TiN-K) and mounting material for a door thickness of 38 - 41 mm are part of the delivery of the handles. For other door thicknesses, it is necessary to order mounting material according to the table.

Door Thickness (mm)	EAN Code
42-45	124699
46-49	124705
50-53	124712
54-57	124729
58-61	124736

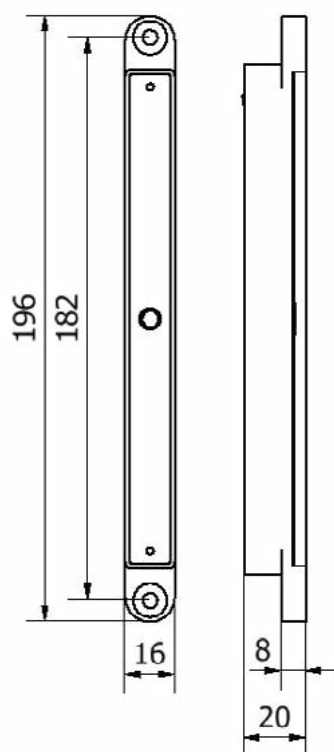


LOCK OPTION

M&T | Magnetic Door Closing System



Dimensions



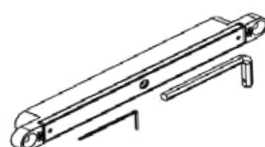
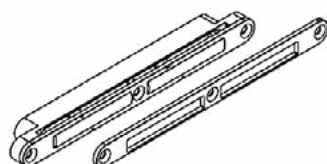
M&T Magnetics is a revolutionary magnetic system that enables doors to open easily and close perfectly. Strong magnets in the door and frame allow for perfectly smooth and noiseless closing, holding the door closed without the need for a lock. Intended primarily for internal doors, the range also includes mini locks that can be added where extra privacy is needed

Material Metal Body
Neodymium Magnets

3 Finishes Satin Stainless Steel
White
Black

Warranty Surfaces: **3 years**
Function: **30 years**

Application Designed for interior doors for heights up to 3m and for door weights up to 200kg. Efficiency can be increased by using 2 or more magnets.



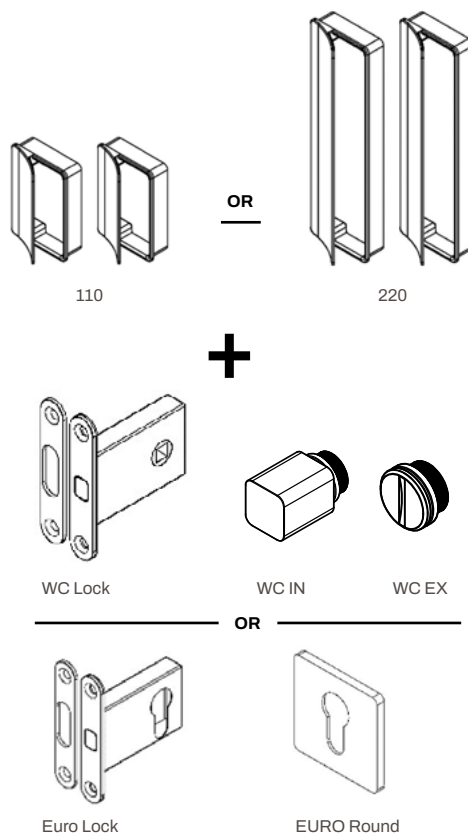
Cylindrical WC/Euro lock

Material Brass
Stainless Steel
Magnetic Stainless Steel

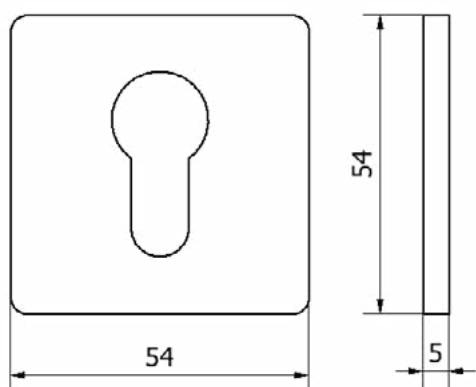
3 Finishes Stainless Steel Brushed
Matt White
Matt Black

Warranty Surfaces: **3 years**

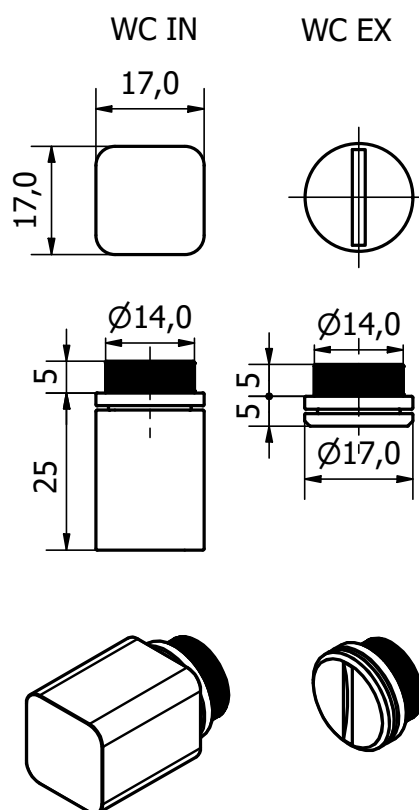
Application Standard for door thickness 38-45mm. Bigger thicknesses must be specified for longer assembly components



EURO Square



Square Cylinder



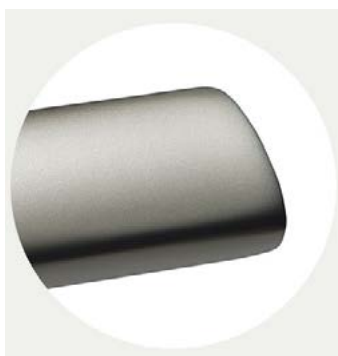
M&T FINISHES

Titanium Finish



Titanium Matt Black: TiN-K

Other Finishes



SNi: Matt Nickel

Titanium Finish

The surface of the door handles and labels M&T is coated with a hard, chemically stable film using methods PVD and PACVD. This technological process is done under lower pressure in vacuum chambers. In the PACVD (Plasma Assisted Chemical Vapour Deposition) process, the coating grows due to heterogeneous chemical reaction on the surface of the substrate.

The reaction substances are supplied in the gas phase. These gases are activated in low temperatures plasma where molecules are dissociated and radicals, ions and excited atoms arise. It decreases the activation energy necessary for the chemical reaction so the reaction temperature can be lower. Moreover, the properties of the growing layer can be controlled by the variation of the plasma parameters. In the PVD (Physical Vapour Deposition) process, the coating grows due to deposition of atoms coming from a solid-state target place in the vacuum recipient walls.

Advantages

A thin layer of 2 microns has several advantages, which makes it so exceptional:

The extraordinary hardness

7 times harder than handles with a protective baked enamel

High resistance to abrasion and scratching

Cannot be damaged/ scratched with normal use

Colours and chemical stability

The surface even after many years has the same colour

Corrosion

Quality applied coatings are only slightly microporous, which prevents the penetration of small particles to material of handle and thus the formation of corrosion.