

MEDIANA EVOLUTION

AGB SILENT LOCK

Description

This lock for internal flush or rebated door with polyamide central latch that ensures extreme silence in closing keeping the reliability and strength. With the QUICK LATCH®, the new patented system of rapid hooking, you need only few seconds to extract it, turn it to the correct hand of the door and insert it with a click again.

Mediana Evolution is remarkably quiet on closing and precise in its mechanical coupling, conveying pleasurable sensations on handle and key movements in which the lever movement is reduced to 30°.


TESTED 500,000 TIMES!


Application


Mediana Evolution and its symmetric latch makes the lock non-handed, avoiding the problem of latch reversal


Mounting


Prepare cutout and mill the panel according to the dimensions shown on the diagram on pg.2.
Secure the lock with two 3.5 x 20 mm screws.

 **Lock Type**
Euro Lock
WC Lock

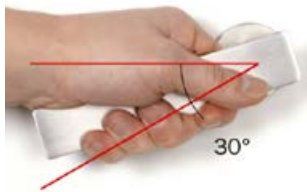
 **Axis**
85mm (Euro)
96 mm (WC)

 **Backsets**
50mm
60mm

 **Material**
Zamak
Steel

 **Steel Forend**
Round End
16mm (Convex)
18mm

 **Hub**
8mm



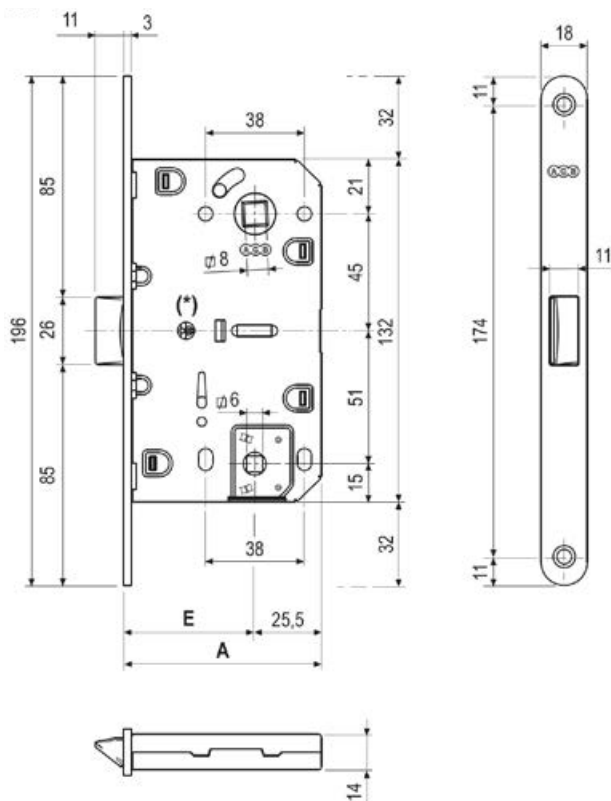
This Mediana Evolution wins against the most difficult weather conditions. Created with innovative materials to ensure the lock function even in extreme humidity, dust & chemical agents.



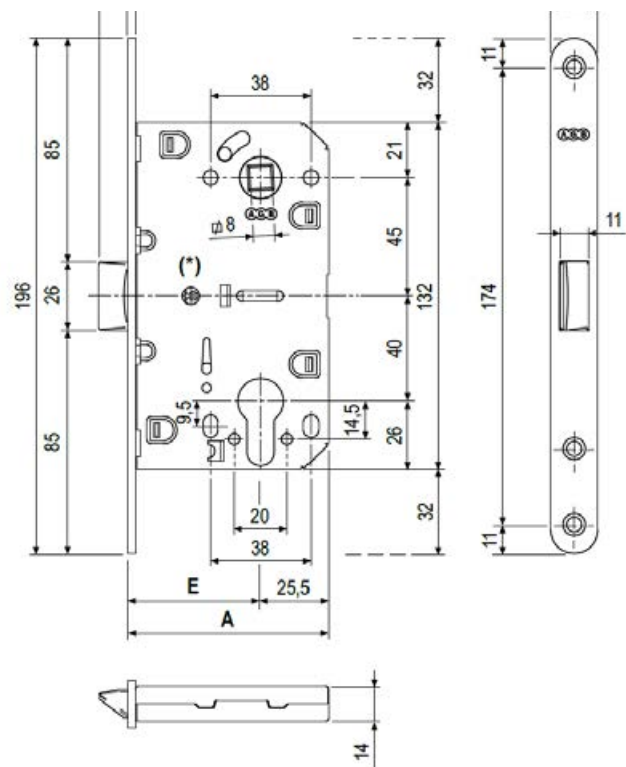
WC (BATHROOM/PASSAGE)



EURO



E	A
35,5	61
50,5	76
60,5	86



E	A
35,5	61
50,5	76
60,5	86

60mm Backset

8mm Hub 18 x 196mm
Round Forend

PASSAGE/BATHROOM LOCK

B01102.60.XX



Nickel Plate B01102.60.06



Matt Chrome Plated B01102.60.34

50mm Backset

8mm Hub 18 x 196mm
Round Forend

PASSAGE/BATHROOM LOCK

B01102.50.XX



Nickel Plated B01102.50.06



Matt Brass B01102.50.23



Matt Chrome B01102.50.34



Antique Brass B01102.50.12



Enamelled Bronze B01102.50.22



Enamelled Brass B01102.50.03



Matt White B01102.50.FM



Matt Black B01102.50.93

60mm Backset

8mm Hub 18 x 196mm
Round Forend

EURO CYLINDER LOCK

B01103.60.XX



Nickel Plate B01103.60.06



Matt Chrome Plated B01103.60.34

50mm Backset

8mm Hub 18 x 196mm
Round Forend

EURO CYLINDER LOCK

B01103.50.XX



Nickel Plated B01103.50.06



Matt Brass B01103.50.23



Matt Chrome B01103.50.34



Antique Brass B01103.50.12



Enamelled Bronze B01103.50.22



Enamelled Brass B01103.50.03



Matt White B01103.50.FM



Matt Black B01103.50.93

EASY-MATIC STRIKER

For Mediana Evolution - for flush doors (thickness 4mm)

MADE IN ITALY



Description

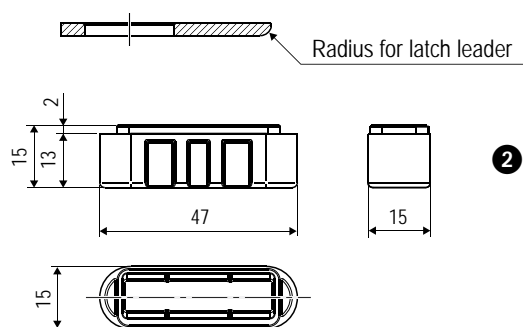
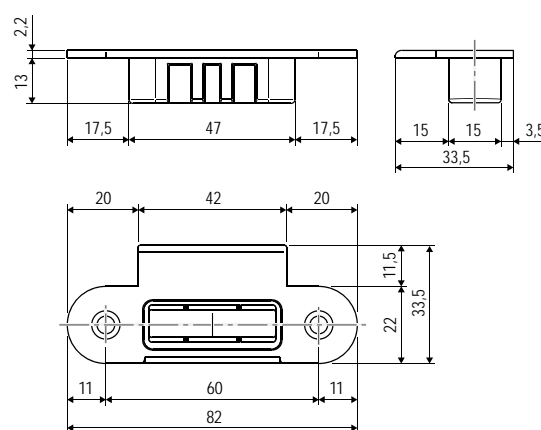
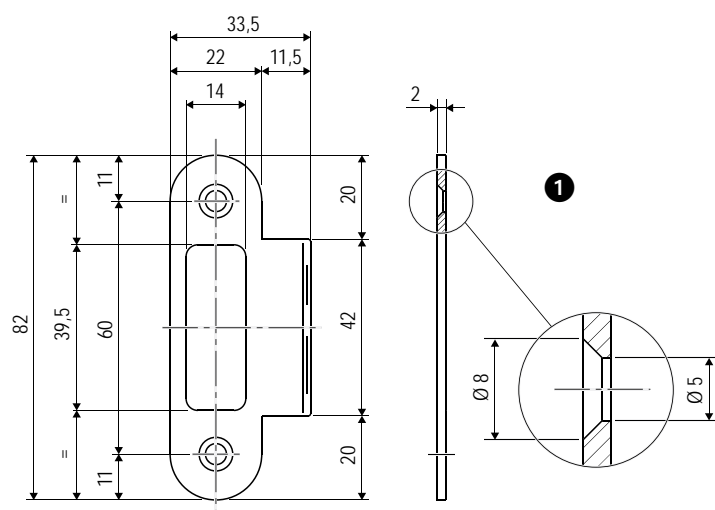
Steel striker (rounded edge with fin).
Designed for use with the tray covering latch hole; interchangeable versions available, with or without magnet, making it compatible with Mediana Evolution and Can be adjusted underpressure (up to 1,5 mm) by turning the tray 180°.

Mounting

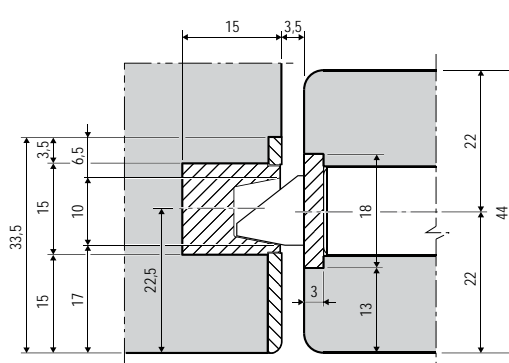
Apply a milled component to the frame (dimensions in drawing). For mounting, use two screws (3,5x20 mm).

Application

On flush doors with thickness of 44mm.



Application on Flush Door



7 Available Finishes



Enamelled Brass
B01402.14.03



Nickel Plated
B01402.14.06



Antique Brass
B01402.14.12



Satin Nickel
B01402.14.13



Enamelled Bronze
B01402.14.22



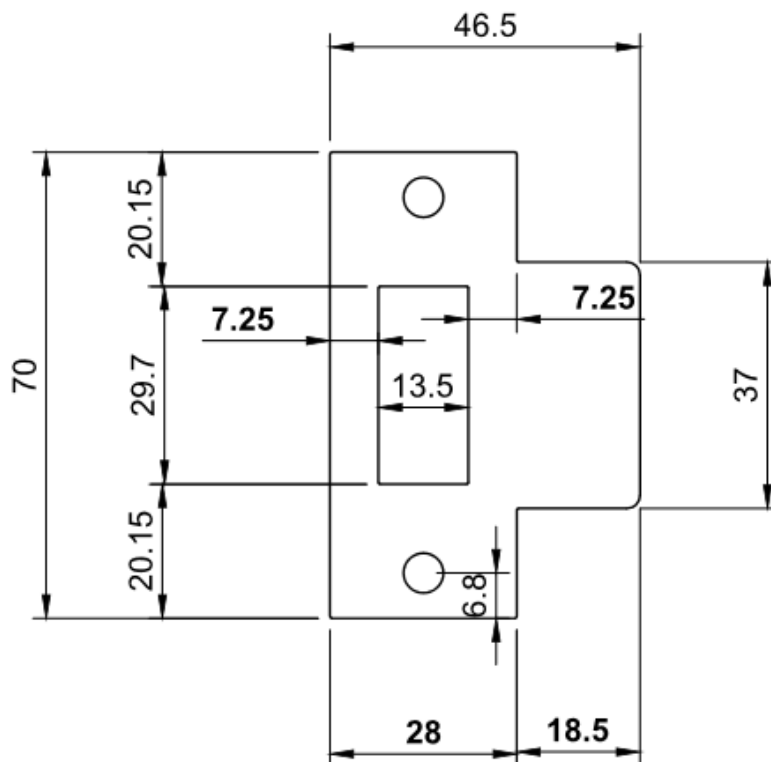
Matt Chrome
B01402.14.34



Matt Black
B01402.14.93

MINIMAL-M STRIKER

For Mediana Evolution - Metal Door Frames



Description

When replacing handles on a metal frames door, where the striker is stamped into the frame, use the Minimal-M striker which is designed to fit into the frame but the latch cutout suits the Mediana locks. This allows the use of European levers with separate privacies using 'one' latch point.

1 Finish

Satin Stainless Steel

TT-Minimal-M-SSS