

MINIMAL

M&T | Lever Handle




Designer: Roman Ulich



Material Handle: Solid Brass
Rosette: Stainless
Magnetic Steel

Dimension for Application Recommended door thickness: 38.5 - 45mm.
Mounting option for door thicknesses from 38.5 - 124mm.

7 Finishes

Satin Nickel	SNi	
Satin Nickel - Grinded	SNi - Grinded	
Glossy Chrome	Cr	




Mounting Bolt-through fixing

Brass Finishes

Natural Brass	Ms	
---------------	----	---

Warranty Mechanics: **3 years**
SNi, Cr: **3 years**
Titanium: **15 years**
Brass: **Lifetime**

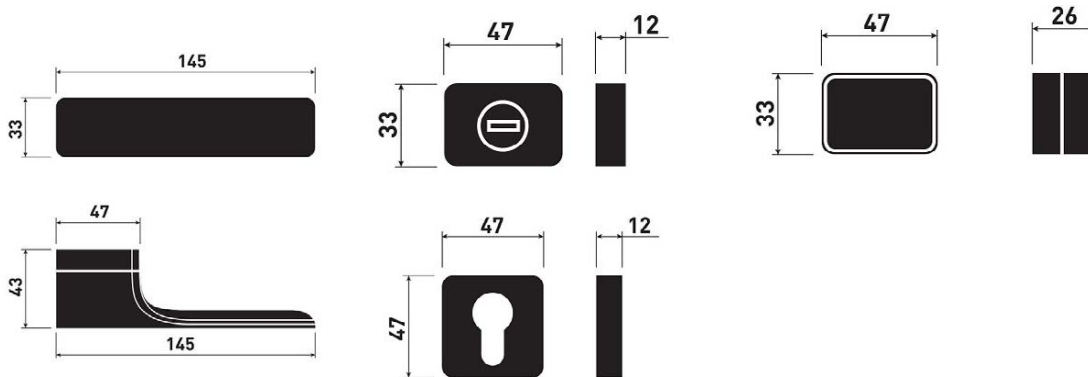
Titanium / PVD Finishes

Black	TiN-K	
Gunmetal	TiN-C	
Light Bronze	TiN-B	

ROSE VARIATION

NON-MAGNETIC

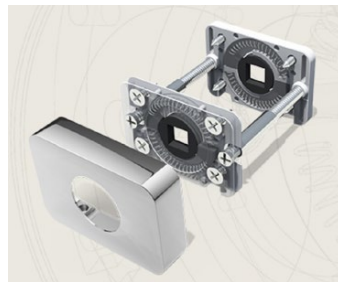
A choice of 7 finishes & colours, with a 3-15 year warranty depending on the type of design, with quality M 2011 mechanics, for use on interior and exterior doors.



MANUFACTORY MECHANICS M 2011

Mechanics of the non-magnetic rose

Mechanics M 2011 - designed, manufactured and assembled at M&T - with its own patent with the system of pressed springs and active slip system preventing from bending and cracking the door in the lock area, with a minimal dimensions of mechanics.



Shown Below: Satin Nickel | SNI

Maximal Privacy shown with insert



LOCK & LATCH OPTIONS

Two Tease offers a range of lock options for handles.
Click on the boxes to see more information.

AGB LOCKS



[Click Here](#)

TUBULAR LATCH & PRIVACY BOLTS



[Click Here](#)

Titanium Finish



The surface of the door handles and labels M&T is coated with a hard, chemically stable film using methods PVD and PACVD. This technological process is done under lower pressure in vacuum chambers. In the PACVD (Plasma Assisted Chemical Vapour Deposition) process, the coating grows due to heterogeneous chemical reaction on the surface of the substrate.

necessary for the chemical reaction so the reaction temperature can be lower. Moreover, the properties of the growing layer can be controlled by the variation of the plasma parameters. In the PVD (Physical Vapour Deposition) process, the coating grows due to deposition of atoms coming from a solid-state target place in the vacuum recipient walls.

The reaction substances are supplied in the gas phase. These gases are activated in low temperatures plasma where molecules are dissociated and radicals, ions and excited atoms arise. It decreases the activations energy

Advantages

A thin layer of 2 microns has several advantages, which makes it so exceptional:

- The extraordinary hardness** 7 times harder than handles with a protective baked enamel
- High resistance to abrasion and scratching** Cannot be damaged/ scratched with normal use
- Colours and chemical stability** The surface even after many years has the same colour
- Corrosion** Quality applied coatings are only slightly microporous, which prevents the penetration of small particles to material of handle and thus the formation of corrosion.

Brass Finishes

- Internal and external use
- Anti-microbial
- Maintenance Free - cotton or micro fibre use
- Lead time: 10 weeks
- Lifetime guarantee for brass



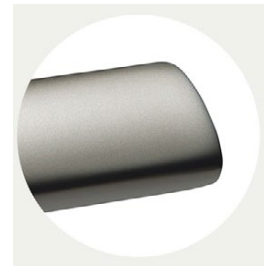
Natural Brass (MS)

Mechanically treated surface on a brass product with a soft texture and colours. The surface ages naturally and the colour changes in according to the weather conditions and climatic conditions.

Other Finishes



Cr: Glossy Chrome



SNi: Matt Nickel