

MIMOLIMIT

M&T | Lever Handle

Designer: Barbora Škorpilová



Shown Above: TiN-K Handle with Alu Compact Insert

Material Handle: Solid Brass
Grips: Wood, metal

7 Finishes Satin Nickel SNi
Satin Nickel SNi - Grinded
- Grinded
Glossy Chrome Cr

Brass Finishes Natural Brass Ms

Titanium / PVD Finishes Black TiN-K
Gunmetal TiN-C
Light Bronze TiN-B

Mounting Bolt-through fixing

6 grips for custom build handle Alu Compact
Walnut
Elm
Bleached Oak
Teak
Oak

Dimension for Application Standard door thickness:
38.5 - 45mm. Mounting
option for door thicknesses
from 38.5 - 126mm.

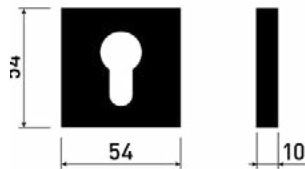
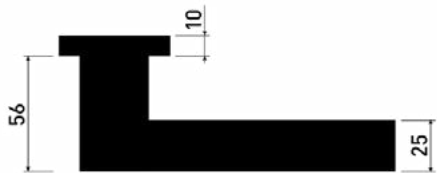
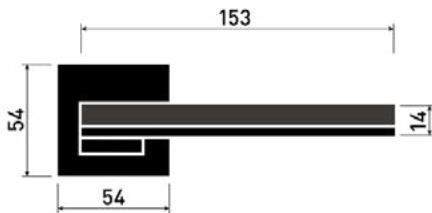
Warranty Mechanics: **3 years**
SNi, Cr: **3 years**
Titanium: **15 years**
Brass: **Lifetime**



MINIMAL ROSE VARIATION

NON-MAGNETIC

A choice of 7 finishes and 6 separate grips. 3-15 year warranty depending on the type of design, with quality M 2006 mechanics, for use on interior and exterior doors.



MANUFACTORY MECHANICS M 2006

Mechanics of the non-magnetic rose

Mechanics M 2006 - designed, manufactured and assembled at M&T - with its own patent with the system of pressed springs and active slip system preventing from bending and cracking the door in the lock area. Simple and fast assembly



Shown Above: Satin Nickel | SNi

GRIP VARIATIONS

Combine the handle and grip in any way

7 Surface Finishes



Cr: Glossy Chrome
EAN: 022155



Ms: Natural Brass
EAN: 054590



SNi: Satin Nickel
EAN: 87284



**SNi-Br: Satin Nickel -
Brushed**
EAN: 85664



TiN-B: Light Bronze
EAN: 85848



TiN-C: Gunmetal
EAN: 85725



TiN-K: Black
EAN: 85787

6 Available Grips



Alu Compact
EAN: 83899



Bleached Oak
EAN: 83875



Walnut
EAN: 83851



Teak
EAN: 83844



Elm
EAN: 83868



Oak
EAN: 83882

LOCK/LATCH OPTIONS

Two Tease Architectural hardware offers a range of Italian made locks for entrance and interior doors: passage, privacy, and key locking. With up to 8 finishes across the range, the lock finish can be perfectly matched with the lever hardware selected.

This range includes:

- Polaris 2XT Magnetic
- Mediana Evolution
- Sicurezza 2.0 - suitable for exterior/perimeter doors requiring higher security.

Polaris 2XT

Magnetic Passage / Bathroom Latch



Finish Shown: Nickel Plated

Mediana Evolution

Passage/ Bathroom Latch



Finish Shown: Nickel Plated

Sicurezza 2.0

External Security



Finish Shown: Nickel Plated

50mm Backset | 60mm Backset

Enamelled Brass	B06102.50.03	
Nickel Plated	B06012.50.06	B06102.60.06
Antique Brass	B06012.50.12	
Satin Nickel	B06012.50.13	
Matt Chrome	B06012.50.34	
Matt White	B06012.50.FM	
Matt Black	B06012.50.93	B06102.60.93

50mm Backset | 60mm Backset

Enamelled Brass	B1102.50.03	
Nickel Plated	B1102.50.06	B01102.60.06
Antique Brass	B1102.50.12	
Matt Brass	B1102.50.23	
Matt Chrome	B1102.50.34	B01102.60.34
Matt White	B1102.50.FM	
Matt Black	B1102.50.93	

50mm Backset | 60mm Backset

Enamelled Brass	B80851.50.03	B80851.60.03
Nickel Plated	B80851.50.06	B80851.60.06
Matt Chrome	B80851.50.34	B80851.60.34
Matt Black	B80851.50.93	B80851.60.93

FINISHES



Enamelled Brass | 03



Satin Nickel | 13



Matt White | FM



Nickel Plate | 06



Matt Chrome | 34



Matt Black | 93



Antique Brass | 12



Matt Brass | 23

Please note that we will match the accompanying striker to the lock specified, if you wish to discuss options please request further information.



Enamelled Brass Plated	B02402.28.03
Nickel Plated	B02402.28.06
Matt Chrome Plated	B02402.28.34
Grey	B02402.28.44
Matt White	B02402.28.91
Matt Black	B06102.28.91



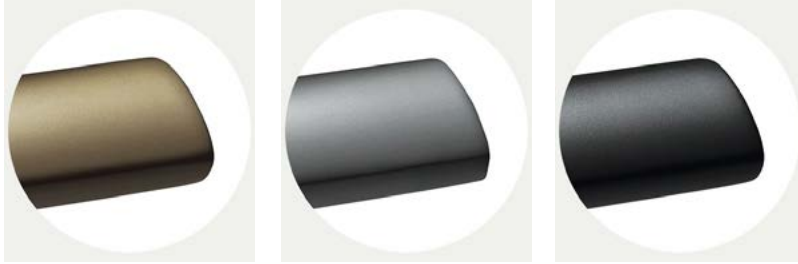
Enamelled Brass Plated	B02402.28.03
Nickel Plated	B02402.28.06
Antique Brass Plated	B02402.05.12
Matt Brass Plated	B02402.05.23
Matt Chrome Plated	B02402.28.34
Grey	B02402.28.44
Matt White	B02402.28.91
Matt Black	B06102.28.91



Enamelled Brass Plated	B02402.28.03
Nickel Plated	B02402.28.06
Antique Brass Plated	B02402.05.12
Satin Nickel Plated	B01402.14.13
Enamelled Bronze Plated	B01402.14.22
Matt Chrome Plated	B01402.14.34
Matt White	B02402.28.91
Matt Black	B06102.28.91

M&T FINISHES

Titanium Finish



Light Bronze: TiN-B

Gunmetal: TiN-C

Matt Black: TiN-K

Titanium Finish

The surface of the door handles and labels M&T is coated with a hard, chemically stable film using methods PVD and PACVD. This technological process is done under lower pressure in vacuum chambers. In the PACVD (Plasma Assisted Chemical Vapour Deposition) process, the coating grows due to heterogeneous chemical reaction on the surface of the substrate.

The reaction substances are supplied in the gas phase. These gases are activated in low temperatures plasma where molecules are dissociated and radicals, ions and excited atoms arise. It decreases the activation energy necessary for the chemical reaction so the reaction temperature can be lower. Moreover, the properties of the growing layer can be controlled by the variation of the plasma parameters. In the PVD (Physical Vapour Deposition) process, the coating grows due to deposition of atoms coming from a solid-state target placed in the vacuum recipient walls.

Advantages

A thin layer of 2 microns has several advantages, which makes it so exceptional:

The extraordinary hardness

7 times harder than handles with a protective baked enamel

High resistance to abrasion and scratching

Cannot be damaged/ scratched with normal use

Colours and chemical stability

The surface even after many years has the same colour

Corrosion

Quality applied coatings are only slightly microporous, which prevents the penetration of small particles to material of handle and thus the formation of corrosion.

Brass Finishes

- Internal and external use
 - Anti-microbial
 - Maintenance Free - cotton or micro fibre use
 - Lead time: 10 weeks
 - Lifetime guarantee for brass
-

Natural Brass (MS)

Mechanically treated surface on a brass product with a soft texture and colours. The surface ages naturally and the colour changes in according to the weather conditions and climatic conditions.



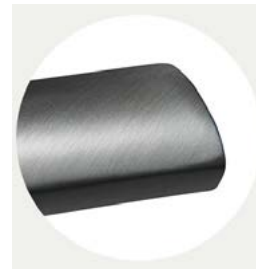
Other Finishes



Cr: Glossy Chrome



SNi: Satin Nickel



SNi- Grinded:
Satin Nickel - Grinded