

MIMOLIMIT

M&T | Lever Handle

Designer: Barbora Škorpilová






Shown Above: TiN-K Handle with Alu Compact Insert

Material Handle: Solid Brass
Grips: Wood, metal

6 grips for custom build handle
Alu Compact
Walnut
Elm
Bleached Oak
Teak
Oak




7 Finishes

Satin Nickel	SNi	
Satin Nickel - Grinded	SNi - Grinded	
Glossy Chrome	Cr	

Brass Finishes

Natural Brass	Ms	
---------------	----	---

Titanium / PVD Finishes

Black	TiN-K	
Gunmetal	TiN-C	
Light Bronze	TiN-B	

Dimension for Application Standard door thickness: 38.5 - 45mm. Mounting option for door thicknesses from 38.5 - 126mm.

Mounting Bolt-through fixing

Warranty

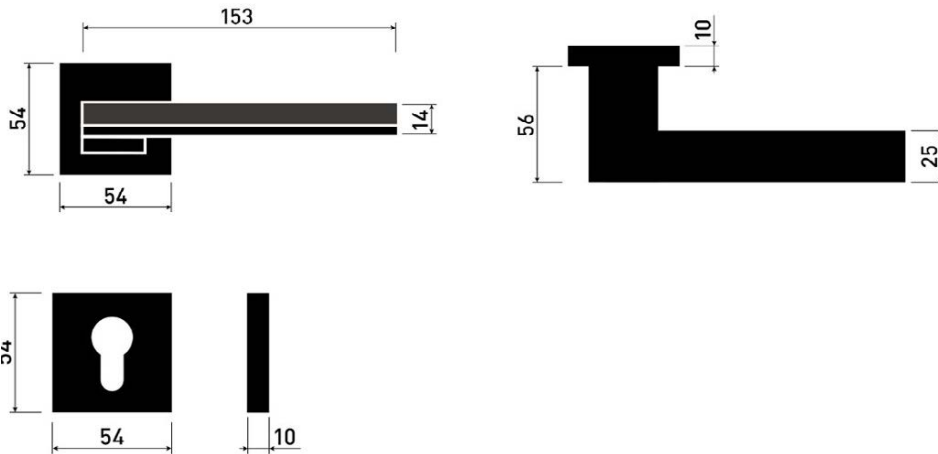
Mechanics:	3 years
SNi, Cr:	3 years
Titanium:	15 years
Brass:	Lifetime



ROSE VARIATION

NON-MAGNETIC

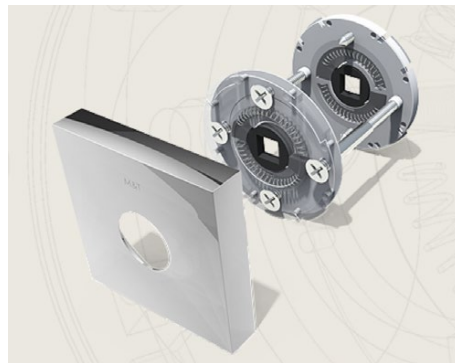
A choice of **7 finishes** and 6 separate grips. **3-15 year warranty** depending on the type of design, with quality M 2006 mechanics, for use on interior and exterior doors.



MANUFACTORY MECHANICS M 2006

Mechanics of the non-magnetic rose

Mechanics M 2006 - designed, manufactured and assembled at M&T - with its own patent with the system of pressed springs and active slip system preventing from bending and cracking the door in the lock area. Simple and fast assembly

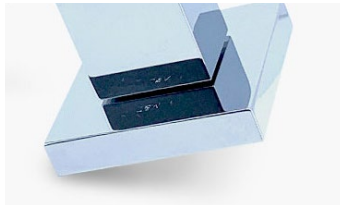


Shown Above: Satin Nickel | SNI

GRIP VARIATIONS

Combine the handle and grip in any way

7 Surface Finishes



Cr: Glossy Chrome
EAN: 022155



Ms: Natural Brass
EAN: 054590



SNi: Satin Nickel
EAN: 87284



**SNi-Br: Satin Nickel -
Brushed**
EAN: 85664



TiN-B: Light Bronze
EAN: 85848

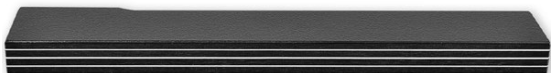


TiN-C: Gunmetal
EAN: 85725



TiN-K: Black
EAN: 85787

6 Available Grips



Alu Compact
EAN: 83899



Bleached Oak
EAN: 83875



Walnut
EAN: 83851



Teak
EAN: 83844



Elm
EAN: 83868



Oak
EAN: 83882

LOCK & LATCH OPTIONS

Two Tease offers a range of lock options for handles.
Click on the boxes to see more information.

AGB LOCKS



[Click Here](#)

TUBULAR LATCH & PRIVACY BOLTS



[Click Here](#)

Titanium Finish



The surface of the door handles and labels M&T is coated with a hard, chemically stable film using methods PVD and PACVD. This technological process is done under lower pressure in vacuum chambers. In the PACVD (Plasma Assisted Chemical Vapour Deposition) process, the coating grows due to heterogeneous chemical reaction on the surface of the substrate.

necessary for the chemical reaction so the reaction temperature can be lower. Moreover, the properties of the growing layer can be controlled by the variation of the plasma parameters. In the PVD (Physical Vapour Deposition) process, the coating grows due to deposition of atoms coming from a solid-state target place in the vacuum recipient walls.

The reaction substances are supplied in the gas phase. These gases are activated in low temperatures plasma where molecules are dissociated and radicals, ions and excited atoms arise. It decreases the activations energy

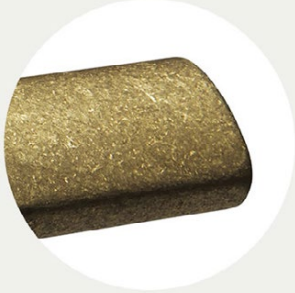
Advantages

A thin layer of 2 microns has several advantages, which makes it so exceptional:

- The extraordinary hardness** 7 times harder than handles with a protective baked enamel
- High resistance to abrasion and scratching** Cannot be damaged/ scratched with normal use
- Colours and chemical stability** The surface even after many years has the same colour
- Corrosion** Quality applied coatings are only slightly microporous, which prevents the penetration of small particles to material of handle and thus the formation of corrosion.

Brass Finishes

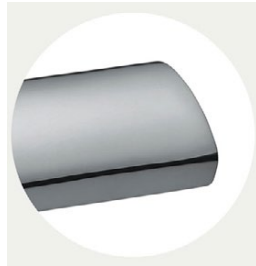
- Internal and external use
- Anti-microbial
- Maintenance Free - cotton or micro fibre use
- Lead time: 10 weeks
- Lifetime guarantee for brass



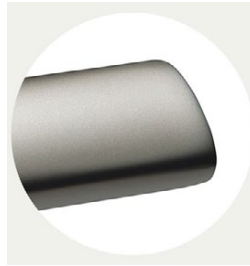
Natural Brass (MS)

Mechanically treated surface on a brass product with a soft texture and colours. The surface ages naturally and the colour changes in according to the weather conditions and climatic conditions.

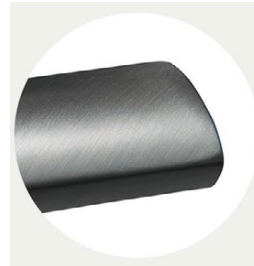
Other Finishes



Cr: Glossy Chrome



SNi: Satin Nickel



SNi- Grinded:
Satin Nickel - Grinded